

## CONTAINER TERMINAL CLUJ NAPOCA EST

The terminal is located in the eastern part of Cluj, in the immediate vicinity of Avram Iancu airport being surrounded by Cluj Napoca East station,

The terminal is located in Someseni, approximately 500 m from the eastern ring road (Cluj Napoca - Turda), and can easily serve all industrial areas in the area (Tetarom I and II) but also other industrial areas in cities such as Reghin, Beclean, Bistrita , Zalau, Baia Mare, Arad, etc).



### **Technical equipment**

#### **a) Handling equipment**

- 1) - Gantry crane covering lines I and II having:
  - . width 25 m;
  - . maximum lifting load 32 tons;
  - . working length 300 m;
  - . 20' and 40' spreader;
  - . fitted for handling mobile boxes.
  
- 2) - 1 reach stacker Fantuzzi (container forklift) :
  - . maximum lifting load 42 tons;
  - . max height 3 stacks;
  - . spreader 20' – 40';



- 1 forklift de 3,5 tones , container fitted .
- 1 forklift 7 tones

**Transshipment tracks :**

- track I 420 m length operated by reach stacker;
- tracks I and II 350 m each operated by gantry crane as well.





## Terminal services

a) Rail transport

b) Shunting

c) Containers or bulk cargo handling

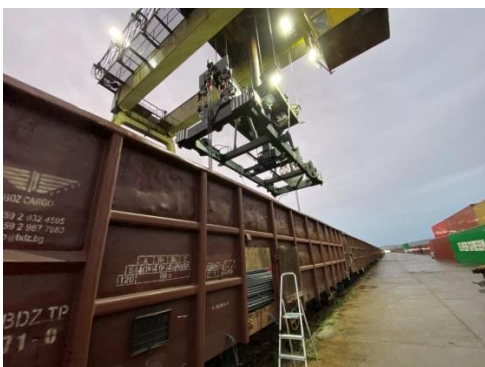
d) Road haulage

ROCOMBI provides last mile trucking using our own semitrailers .

d) storage

In open space, on the terminal's platform , or we can intermediate warehousing .

e) Metal bars or row material handling





e) Repairs and maintenance

Damages as holes or deteriorated floor can be repaired in terminal.  
Also welding or container cleaning can be done.